

STEIGER®
T 300 XS

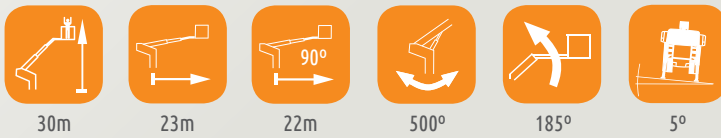
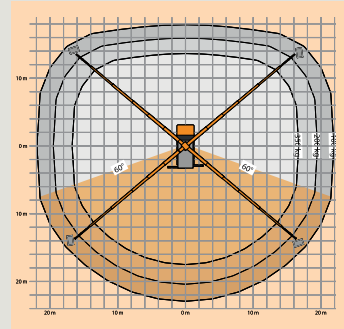
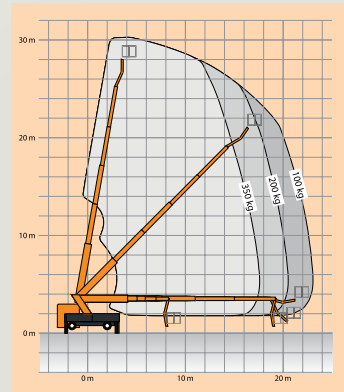


STEIGER® T 300 XS

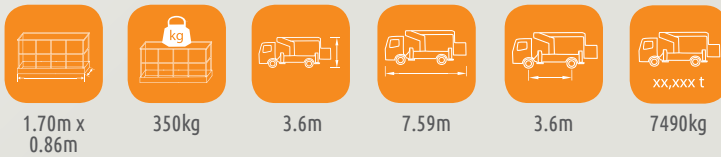


FEATURES

- 30m working height
- 23m outreach
- 7.59m vehicle length - shortest machine on the market
- Stable turret construction (less maintenance)
- No dual ball bearing supported ring (low maintenance costs)
- Modern construction with high stability and safety
- Proven Euro 6 chassis can be selected
- Jack boxes and turret tube made of high-strength, fine-grained steel, for better performance data and increased torsion resistance (longevity)
- Comfortable and easy to handle jack control on both vehicle sides (continuation from the successful TB / TBR range)
- Shorter, stable base frame construction
- Extension of the booms by means of two telescopic cylinders
- New boom profile based on the T 900 HF boom system
- An optimised boom support profile ensures for a more stable boom design
- Shorter construction due to new profile shape
- Low weight combined with highest stability
- Increased basket-load: 350kg combined with a huge outreach
- Robust, hydraulic 2 x 90° basket rotating device
- Available on Mercedes, Iveco and MAN chassis



working height **30m**
 maximum outreach **23m**
 platform capacity **350kg**



Easy to handle jack control



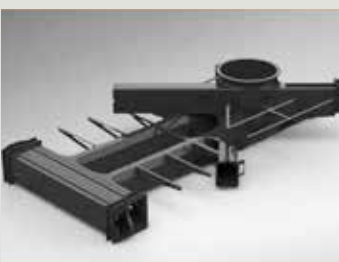
Jack boxes and turret tube made of high-strength fine-grained steel



More compact boom heads



Sufficient weight reserves e.g. for boxes and sidewall



Shorter, stable base frame construction



Construction according to the latest topology optimization method in geometric form



Compatible with other working baskets of the previous T range

Revision: 03/2022

Technical information is subject to change without notice. Images may show optional equipment. *Subject to options fitted. The photographs in this brochure are for promotional purposes only. Specifications are subject to change without notice.

Ruthmann
 1 Altendiez Way, Latimer Park, Burton Latimer, Kettering, NN15 5YT
 T: 01536 721010 E: sales@ruthmann.uk www.ruthmann.uk